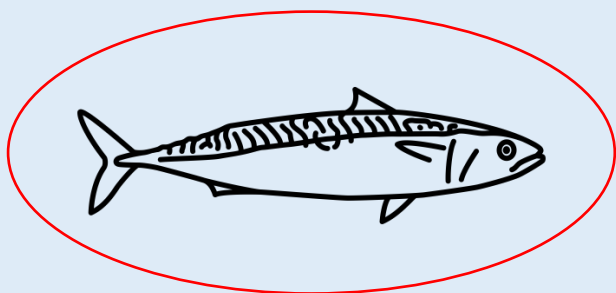


Community-based approaches to studying recreational fishing of Atlantic mackerel

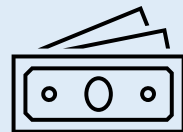
Kayla Hamelin | PhD Candidate | Dalhousie University

Credit: Arthur Shlain, Noun Project

 CRITICAL ZONE 



COMMERCIAL FISHERY



BAIT FISHERY

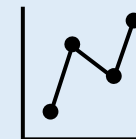


RECREATIONAL FISHERY

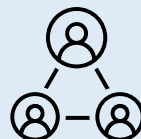
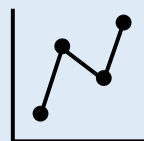
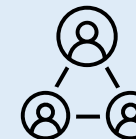


CHALLENGES

Lack of information



Lack of stakeholder engagement and participation



Study #1: BIOLOGICAL AND OPERATIONAL

- Data : catch, effort, and discard rates
- Goal: assess trends based on date, time, tide level, temperature

Study #2: SOCIO-ECONOMIC/CULTURAL

- Data: fishing community characteristics
- Goal: describe how people depend on and benefit from recreational fishing

Contact: kayla.hamelin@dal.ca // @GoFishNS

